

333F322-385

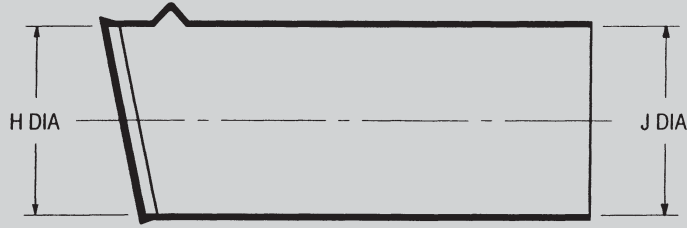
**RIGHT ANGLE, BOOT
90°, LOW PROFILE
WITH ADAPTER LIP**



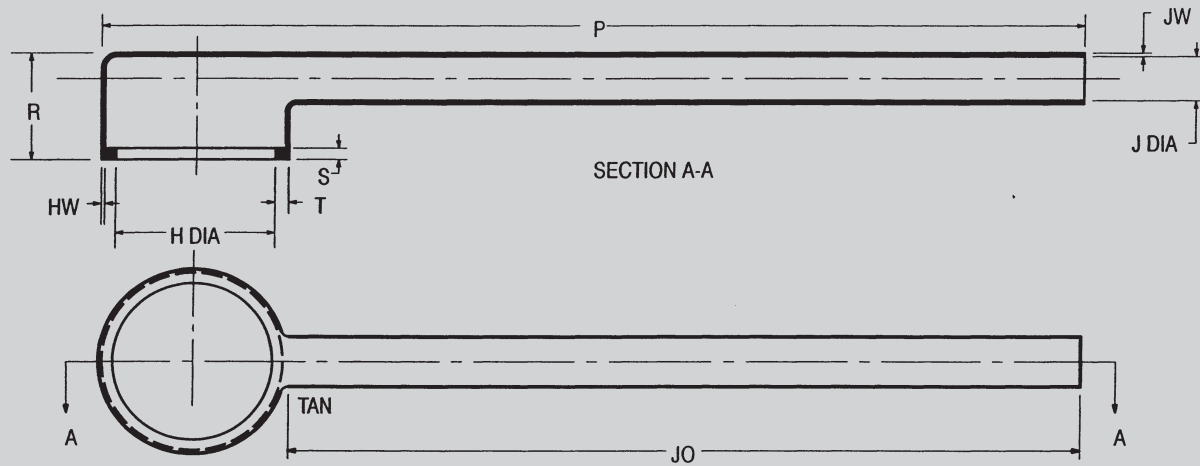
This boot provides connector cable strain relief in applications with partially loaded connectors resulting in small cable diameters requiring a high shrink ratio.

1. All dimensions are in inches – all angles in degrees.
2. Dimensions in table:
X = Expanded (minimum);
R = Recovered (maximum)
3. Colour: Black

EXPANDED, AS SUPPLIED, PART



FULLY RECOVERED PART (AFTER HEATING)



Part Number	H DIA		J DIA		P ±10% R	R ±15% R	T ±0.03 R	JO ±10% R	HW +0.06 -0.03 R	JW ±0.03 R	S +0.06 -0.03 R
	MIN X	MAX R	MIN X	MAX R							
333F322	0.94	0.39	0.68	0.26	4.14	0.73	0.05	3.45	0.06	0.06	0.06
333F332	1.07	0.52	0.82	0.29	4.56	0.78	0.05	3.90	0.06	0.06	0.06
333F343	1.22	0.73	0.96	0.33	5.76	0.82	0.05	4.50	0.07	0.06	0.07
333F353	1.40	0.85	1.13	0.40	6.78	0.86	0.05	5.22	0.07	0.06	0.07
333F364	1.53	1.10	1.24	0.43	7.29	0.95	0.07	5.66	0.07	0.06	0.07
333F374	1.78	1.34	1.51	0.48	8.41	1.08	0.07	6.66	0.07	0.06	0.07
333F385	2.03	1.62	1.75	0.56	8.84	1.16	0.07	6.82	0.07	0.07	0.07

MATERIALS AVAILABLE

- 6 Flexible Flame Retardant Polyolefin
- 8 Viton-Polyester Polymer Blend
- 9 Modified Elastomer Blend

ADHESIVE OPTIONS

Adhesive (Part Numbers)	Factory Applied	Description
TSA-200	-200	Thermoset 125°C
TTS-250	-250	Thermoplastic 80°C
TTS-450	-450	Thermoplastic 120°C
W24	W24	1 Part Epoxy 200°C

Larger expansions available on request for -6 material