



MS3057A Clamps provide a simple, economical way of achieving strain relief on cable assemblies and wiring harnesses. All clamps mate with the MIL-DTL-5015 "A" Solder shell size shown.

For reference connector part numbers are MS3100A - MS3106A

Bushings (MS3420) listed in MS3057 Style A Clamps are for reference only and must be ordered separately if required

MS3057-16A through MS3057-24A may require two bushings.

For example, MS3057-16A may require MS3420-16 and MS3420-12

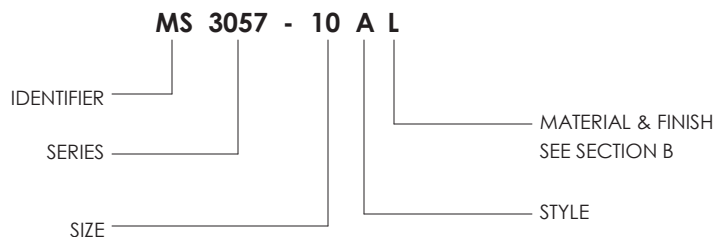
MS3057-28A through MS3057-40A may require three bushings.

For example, MS3057-40A may require MS3420-40, MS3420-32 and MS3420-28

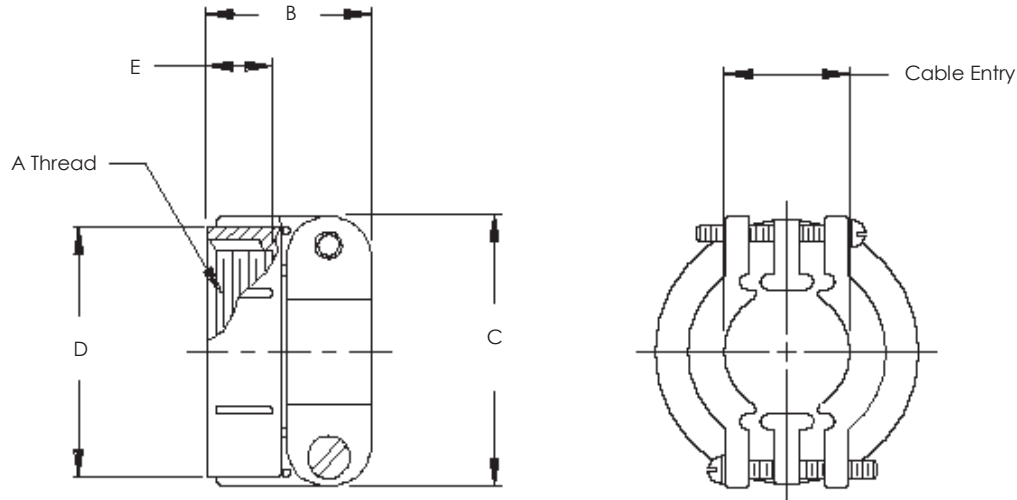
Unless otherwise specified all clamps are cast in aluminum alloy per QQ-A-591; ASTMSC84A. All hardware including screws and washers are Corrosion Resisting Steel per QQ-S-763 (300 Series); ASTM B484

MS3057 Style A Clamps are interchangeable with AN3057 Style A Clamps

PART NUMBER BREAKDOWN



DISCLAIMER: All information is believed to be reliable. Readers should independently evaluate the suitability of each product for their application. Compaero makes no warranties as to the accuracy or completeness of the information herein and disclaims any liability regarding its use. Specifications are subject to change without notice. Compaero reserves the right to make changes, without notification to the customer, to processing or materials that do not affect compliance with any applicable specification. **Drawings are not to scale.**



| Dash No. | Connector Shell Reference | A Thread Class 2B | Cable Entry Max | E Ref. | D Dia ±.031 (0.8) | C ±.031 (0.8) | B ±.031 (0.8) | Bushing Reference |
|----------|---------------------------|-------------------|-----------------|-------------|-------------------|---------------|---------------|-------------------|
| 3A | 8S, 10S | 1/2 - 28 UNEF | .250 (6.4) | .406 (10.3) | .688 (17.5) | .812 (20.6) | .812 (20.6) | MS3420-3 |
| 4A | 10SL, 12S, 12 | 5/8 - 24 UNEF | .312 (7.9) | .406 (10.3) | .812 (20.6) | .875 (22.2) | .812 (20.6) | MS3420-4 |
| 6A | 14S, 14 | 3/4 - 20 UNEF | .438 (11.1) | .406 (10.3) | .969 (24.6) | 1.062 (27.0) | .875 (22.2) | MS3420-6 |
| 8A | 16S, 16 | 7/8 - 20 UNEF | .562 (14.3) | .406 (10.3) | 1.094 (27.8) | 1.156 (29.4) | .938 (23.8) | MS3420-8 |
| 10A | 18 | 1 - 20 UNEF | .625 (15.9) | .406 (10.3) | 1.188 (30.2) | 1.250 (31.8) | .938 (23.8) | MS3420-10 |
| 12A | 20, 22 | 1 3/16 - 18 UNEF | .750 (19.1) | .406 (10.3) | 1.375 (34.9) | 1.469 (37.3) | .938 (23.8) | MS3420-12 |
| 16A | 24, 28 | 1 7/16 - 18 UNEF | .938 (23.8) | .406 (10.3) | 1.656 (42.1) | 1.688 (42.9) | 1.031 (26.2) | MS3420-16 |
| 20A | 32 | 1 3/4 - 18 UNS | 1.250 (31.8) | .469 (11.9) | 2.031 (51.6) | 2.031 (51.6) | 1.094 (27.8) | MS3420-20 |
| 24A | 36 | 2 - 18 UNS | 1.375 (34.9) | .531 (13.5) | 2.219 (56.4) | 2.281 (57.9) | 1.156 (29.4) | MS3420-24 |
| 28A | 40 | 2 1/4 - 16 UN | 1.625 (41.3) | .531 (13.5) | 2.500 (63.5) | 2.688 (68.3) | 1.688 (42.9) | MS3420-28 |
| 32A | 44 | 2 1/2 - 16 UN | 1.875 (47.6) | .594 (15.1) | 2.781 (70.6) | 2.938 (74.6) | 1.750 (44.5) | MS3420-32 |
| 40A | 48 | 3 - 16 UN | 2.375 (60.3) | .656 (16.7) | 3.281 (83.3) | 3.500 (88.9) | 1.750 (44.5) | MS3420-40 |

DISCLAIMER: All information is believed to be reliable. Readers should independently evaluate the suitability of each product for their application. Compaero makes no warranties as to the accuracy or completeness of the information herein and disclaims any liability regarding its use. Specifications are subject to change without notice. Compaero reserves the right to make changes, without notification to the customer, to processing or materials that do not affect compliance with any applicable specification. **Drawings are not to scale.**

Compaero employs traceable methods when sourcing and using material. All manufacturer certifications are kept on file and are available upon request. For more information please contact Compaero.

| Component | Material |
|-----------------------------|---|
| Barrels | Aluminum 6061 or 300 Series Stainless Steel |
| Barrel Castings | Aluminum Alloy A380 |
| Braid / Shield | Tinned Copper per QQB-575 |
| Clamp Bodies | Aluminum 6061 or 300 Series Stainless Steel |
| Clamp Grommets, Bushings | Neoprene, Silicone or Fluorosilicone |
| Clamp Nuts | 300 Series Stainless Steel |
| Clamp Saddles | Aluminum 6061 or 300 Series Stainless Steel |
| Clamp Hardware | 300 Series Stainless Steel |
| Coupling Rings | Aluminum 6061 or 300 Series Stainless Steel |
| E-Nuts | Aluminum 6061 or 300 Series Stainless Steel |
| Ferrules | Aluminum 6061 or 300 Series Stainless Steel |
| Followers | Aluminum 6061 or 300 Series Stainless Steel |
| O-Rings | Silicone |
| Retaining Rings | 300 Series Stainless Steel |
| Self Locking Clips | Non Corrosive material |

DISCLAIMER: All information is believed to be reliable. Readers should independently evaluate the suitability of each product for their application. Compaero makes no warranties as to the accuracy or completeness of the information herein and disclaims any liability regarding its use. Specifications are subject to change without notice. Compaero reserves the right to make changes, without notification to the customer, to processing or materials that do not affect compliance with any applicable specification. **Drawings are not to scale.**

Table 1 shows common Compaero finishes and their Mil-Spec equivalents (where applicable).
Additional finishes are available upon request.

TABLE 1 - Common Material and Finish Codes

| Compaero Ordering Code | AS85049 | Material | Finish |
|------------------------|---------|-----------------|---|
| C | A | Aluminum | Black anodize - In accordance with Class 2 of AMS-A-8625, Type II. -65 to +175 °C |
| F | N | Aluminum | Electroless nickel - In accordance with AMS-C-26074 or AMS2404. -65 to +200 °C |
| H | N/A | Aluminum | Clear Cadmium - SAE-AMS-QQ-P-416 Type II Class 2 over electroless nickel, 1000 Hour Salt Spray, Conductive -65 to +175°C |
| W | W | Aluminum | Cadmium, Olive drab over suitable underplate, 1000 hour salt spray -65 to +175 °C |
| P | X | Aluminum | Nickel fluorocarbon polymer. Nickel with fluorocarbon polymer additives over a suitable underplate to withstand |
| D | Y | Aluminum | Pure dense electrodeposited aluminum in accordance with MIL-DTL-83488, Type II, to withstand 500 hours of salt |
| T | Z | Aluminum | Zinc nickel, Black, in accordance with ASTM B841 over suitable underplate to withstand 1000 hours of salt spray testing. |
| Y | N/A | Aluminum | Zinc-Cobalt, Olive Drab, ASTM B 840 Grade 6 Type D over electroless nickel, 350 Hour Salt Spray, Conductive -65 to +175°C |
| Z | N/A | Aluminum | Zinc-Cobalt, Black, ASTM B 840 Grade 6 Type D over electroless nickel 350 Hour Salt Spray, Conductive -65 to +175°C |
| KB | B | Stainless Steel | Black cadmium - In accordance with AMS-QQ-P-416, Type II, Class 3. -65 to +175 °C |
| K | S | Stainless Steel | Passivate - In accordance with AMS-QQ-P-35, AMS 2700, or ASTM A 967. -65 to + 200 °C |
| KP | XS | Stainless Steel | Nickel fluorocarbon polymer. Nickel with fluorocarbon polymer additives over a suitable underplate to withstand |
| KD | YS | Stainless Steel | Pure dense electrodeposited aluminum in accordance with MIL-DTL-83488, Type II |
| KT | ZS | Stainless Steel | Zinc nickel in accordance with ASTM B841 over suitable underplate to withstand 1000 hours of salt spray testing |
| KN | N/A | Stainless Steel | Electrodeposited Nickel per SAE-AMS-QQ-N-290 Class 1 Grade F |
| M | T | Composite | Composite material without plating |
| MJ | J | Composite | Olive drab cadmium plate in accordance with AMS-QQ-P-416. To withstand 2000 hour salt spray. Finish shall be electrically conductive. -65 to + 175 °C |
| ML | L | Composite | Cadmium (olive drab) over electroless nickel, selective plating -65 to +175 °C |
| MM | M | Composite | Electrically conductive electroless nickel plating. Finish shall withstand 2000 hour salt spray. -65 to +200 °C |

DISCLAIMER: All information is believed to be reliable. Readers should independently evaluate the suitability of each product for their application. Compaero makes no warranties as to the accuracy or completeness of the information herein and disclaims any liability regarding its use. Specifications are subject to change without notice. Compaero reserves the right to make changes, without notification to the customer, to processing or materials that do not affect compliance with any applicable specification. **Drawings are not to scale.**