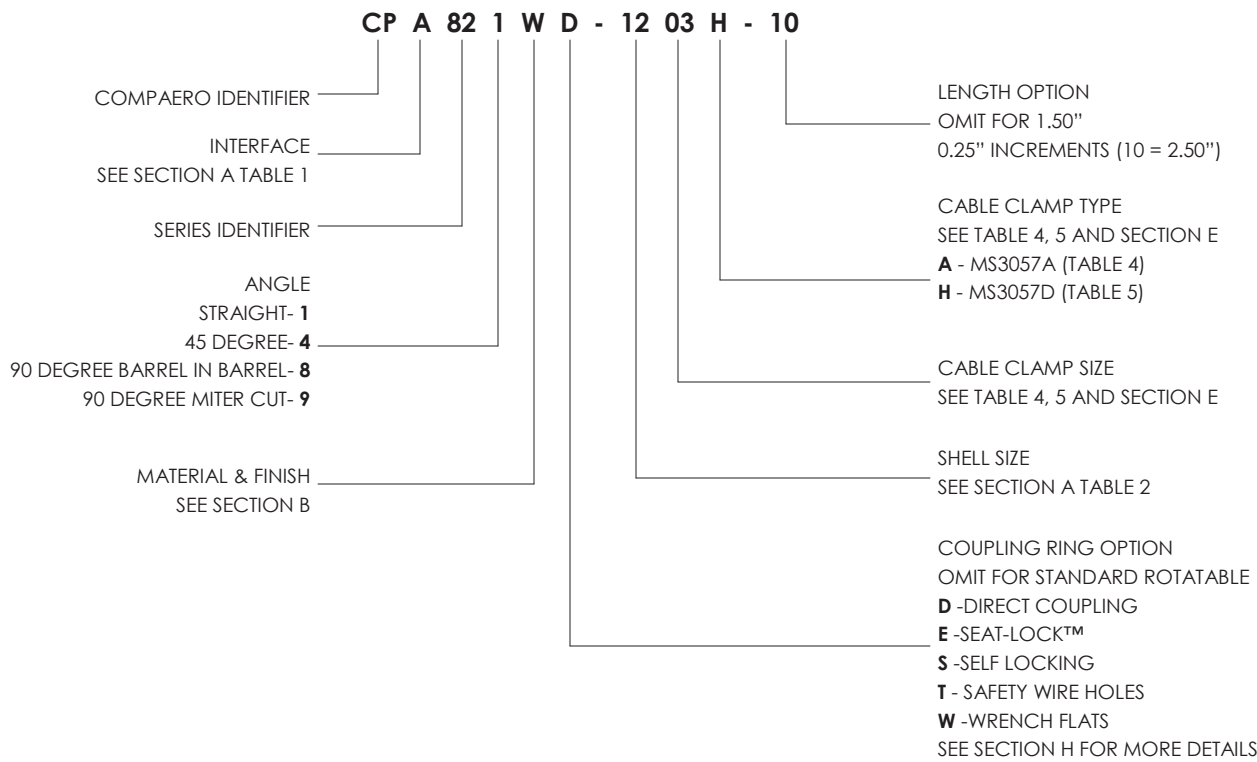


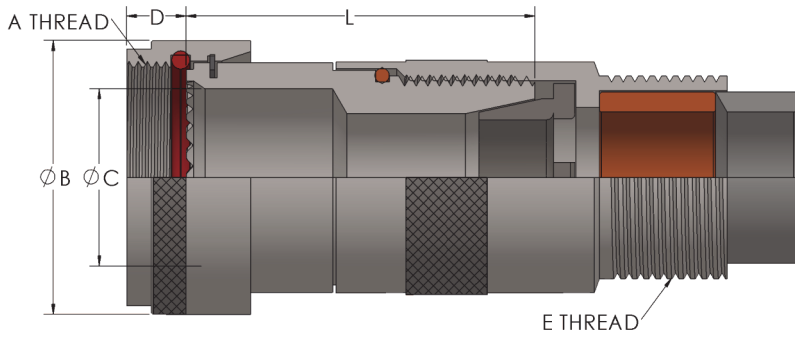
Series 82 Backshells provide EMI/RFI protection for both inner and outer shields using a single specialized ferrule. They also provide environmental protection and are submersible up to six feet of water. Clamp styles are available in MS3057A (Regular Duty) and MS3057D (Heavy Duty). Choose between straight, 45 and 90 degree angles. These backshells will accommodate wire and cable bundles with outside diameters ranging from 0.125" to 1.875"

- Notes:**
1. All dimensions are in Inches
 2. See Section G for torque information
 3. O-Ring not supplied with 'A' interface (does not affect environmental capability)
 4. When Cable Entry exceeds dimension 'C' a Style 2 adapter is supplied.
Use MOD Code -014 for a one piece construction. See Section H for details.
 5. Length on straight adapters will be 1.50" (**Dimension L**) unless otherwise specified in part number

PART NUMBER BREAKDOWN

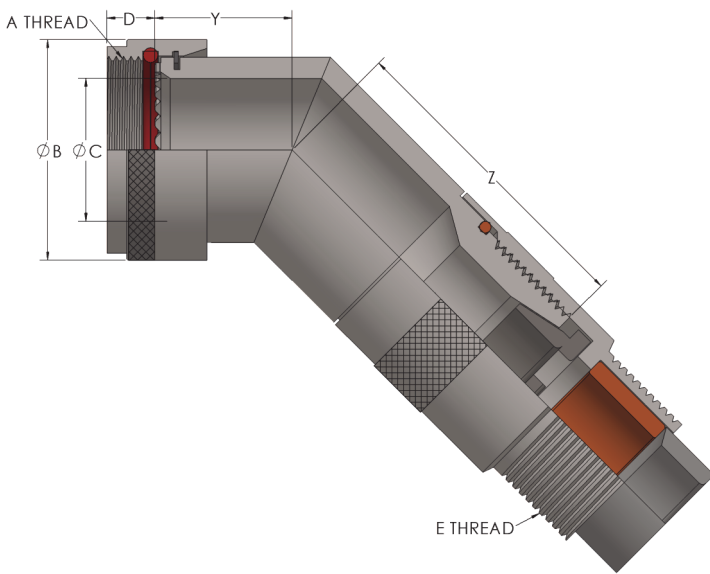


DISCLAIMER: All information is believed to be reliable. Readers should independently evaluate the suitability of each product for their application. Compaero makes no warranties as to the accuracy or completeness of the information herein and disclaims any liability regarding its use. Specifications are subject to change without notice. Compaero reserves the right to make changes, without notification to the customer, to processing or materials that do not affect compliance with any applicable specification. **Drawings are not to scale.**

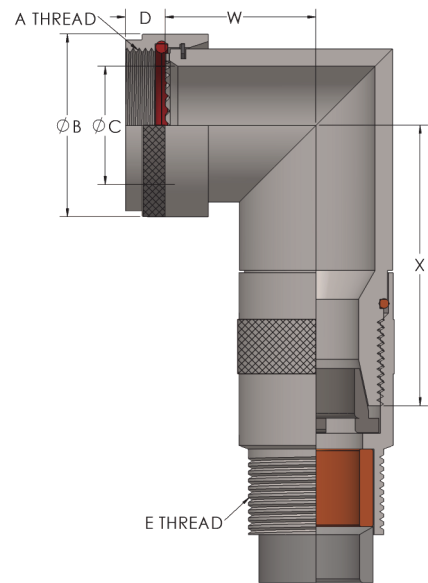


See **Section A** for A Thread, B, C and D Dimensions

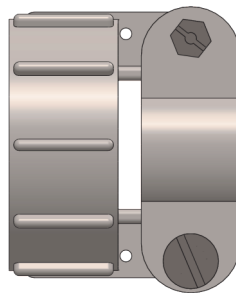
Angle 1 - Straight Rotatable Coupling



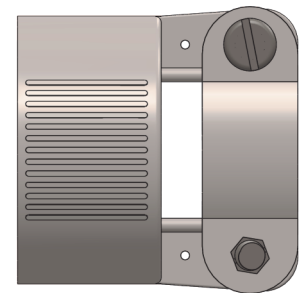
Angle 4
45 Degrees



Angle 9
90 Degree Miter



Order Code: **A**
MS3057A - Regular Duty Clamp



Order Code: **H**
MS3057D - Heavy Duty Clamp

DISCLAIMER: All information is believed to be reliable. Readers should independently evaluate the suitability of each product for their application. Compaero makes no warranties as to the accuracy or completeness of the information herein and disclaims any liability regarding its use. Specifications are subject to change without notice. Compaero reserves the right to make changes, without notification to the customer, to processing or materials that do not affect compliance with any applicable specification. **Drawings are not to scale.**



TABLE 3 - DIMENSIONS

| SHELL SIZE | W REF | X REF | Y REF | Z REF |
|------------|-------|-------|-------|-------|
| 8, 9 | 0.612 | 0.844 | 0.727 | 1.040 |
| 10, 11 | 0.675 | 0.910 | 0.831 | 1.105 |
| 12, 13 | 0.698 | 0.973 | 0.886 | 1.168 |
| 14, 15 | 0.723 | 1.035 | 0.946 | 1.230 |
| 16, 17 | 0.748 | 1.098 | 1.008 | 1.262 |
| 18, 19 | 0.767 | 1.160 | 1.052 | 1.199 |
| 20, 21 | 0.793 | 1.223 | 1.115 | 1.324 |
| 22, 23 | 0.818 | 1.285 | 1.177 | 1.480 |
| 24, 25 | 0.844 | 1.348 | 1.240 | 1.605 |
| 28 | 0.904 | 1.408 | 1.300 | 1.665 |
| 32 | 0.964 | 1.468 | 1.360 | 1.725 |
| 36 | 1.024 | 1.528 | 1.420 | 1.785 |
| 40 | 1.084 | 1.588 | 1.480 | 1.845 |
| 44 | 1.144 | 1.648 | 1.540 | 1.905 |
| 48 | 1.204 | 1.708 | 1.600 | 1.965 |

TABLE 4 - CABLE ENTRY - STYLE 'A' CLAMPS

| ENTRY CODE | CLAMP REF | MIN | MAX | D REF | E THREAD |
|------------|------------|-------|-------|-------|----------------|
| 01 | MS3057-3A | 0.156 | 0.250 | 0.250 | 1/2-28 UNEF |
| 02 | MS3057-4A | 0.188 | 0.312 | 0.312 | 5/8-24 UNEF |
| 03 | MS3057-6A | 0.281 | 0.438 | 0.438 | 3/4-20 UNEF |
| 04 | MS3057-8A | 0.387 | 0.562 | 0.562 | 7/8-20 UNEF |
| 05 | MS3057-10A | 0.375 | 0.625 | 0.625 | 1-20 UNEF |
| 06 | MS3057-12A | 0.438 | 0.750 | 0.750 | 1 3/16-18 UNEF |
| 07 | MS3057-16A | 0.625 | 0.938 | 0.938 | 1 7/16-18 UNEF |
| 08 | MS3057-20A | 0.875 | 1.250 | 1.250 | 1 3/4-18 UNS |
| 09 | MS3057-24A | 1.000 | 1.375 | 1.375 | 2 - 18 UNS |
| 10 | MS3057-28A | 1.250 | 1.625 | 1.625 | 2 1/4-16 UN |
| 11 | MS3057-32A | 1.437 | 1.875 | 1.875 | 2 1/2-16 UN |

TABLE 5 - CABLE ENTRY - STYLE 'H' CLAMPS

| ENTRY CODE | CLAMP REF | MIN | MAX | D REF | E THREAD |
|------------|------------|-------|-------|-------|----------------|
| 02 | MS3057-4D | 0.125 | 0.312 | 0.312 | 5/8-24 UNEF |
| 03 | MS3057-6D | 0.250 | 0.437 | 0.437 | 3/4-20 UNEF |
| 04 | MS3057-8D | 0.312 | 0.562 | 0.562 | 7/8-20 UNEF |
| 05 | MS3057-10D | 0.350 | 0.625 | 0.625 | 1-20 UNEF |
| 06 | MS3057-12D | 0.500 | 0.750 | 0.750 | 1 3/16-18 UNEF |
| 07 | MS3057-16D | 0.625 | 0.937 | 0.937 | 1 7/16-18 UNEF |
| 08 | MS3057-20D | 0.875 | 1.250 | 1.250 | 1 3/4-18 UNS |
| 09 | MS3057-24D | 1.000 | 1.375 | 1.375 | 2 - 18 UNS |
| 10 | MS3057-28D | 1.250 | 1.625 | 1.625 | 2 1/4-16 UN |
| 11 | MS3057-32D | 1.437 | 1.875 | 1.875 | 2 1/2-16 UN |

DISCLAIMER: All information is believed to be reliable. Readers should independently evaluate the suitability of each product for their application. Compaero makes no warranties as to the accuracy or completeness of the information herein and disclaims any liability regarding its use. Specifications are subject to change without notice. Compaero reserves the right to make changes, without notification to the customer, to processing or materials that do not affect compliance with any applicable specification. **Drawings are not to scale.**



COMMON (STOCKED) MATERIAL AND FINISHES

| COMPAERO FINISH CODE | AS85049 REF | MATERIAL | FINISH |
|----------------------|-------------|-----------------|--|
| F | N | Aluminum | Electroless nickel - In accordance with AMS-C-26074 or AMS2404. -65 to +200 °C |
| W | W | Aluminum | Cadmium - Olive drab over suitable underplate, 1000 hour salt spray -65 to +175 °C |
| K | S | Stainless Steel | Passivate - In accordance with AMS-QQ-P-35, AMS 2700, or ASTM A 967. -65 to + 200 °C |

STYLE 1 MAX ENTRY REFERENCE CHART

| SHELL SIZE | MAX STYLE 1 ENTRY | | |
|------------|-------------------|-------------|-------------|
| | INTERFACE A | INTERFACE F | INTERFACE H |
| 8, 9 | 02 | 02 | 02 |
| 10, 11 | 02 | 02 | 02 |
| 12, 13 | 03 | 03 | 03 |
| 14, 15 | 04 | 04 | 05 |
| 16, 17 | 05 | 06 | 06 |
| 18, 19 | 06 | 06 | 06 |
| 20, 21 | 06 | 07 | 07 |
| 22, 23 | 07 | 07 | 07 |
| 24, 25 | 07 | 08 | 07 |
| 28 | 09 | N/A | N/A |
| 32 | 10 | N/A | N/A |
| 36 | 11 | N/A | N/A |
| 40 | 11 | N/A | N/A |

DISCLAIMER: All information is believed to be reliable. Readers should independently evaluate the suitability of each product for their application. Compaero makes no warranties as to the accuracy or completeness of the information herein and disclaims any liability regarding its use. Specifications are subject to change without notice. Compaero reserves the right to make changes, without notification to the customer, to processing or materials that do not affect compliance with any applicable specification. **Drawings are not to scale.**

Compaero manufacturers connector accessories for most circular connector series'. This section provides information on the more common interfaces. If the desired interface is not shown please contact Compaero. Table 2 contains Threads and dimensions of commonly used connector series'. If the required dimensions are not shown please contact Compaero.

TABLE 1 - CONNECTOR INTERFACE SPECIFICATION

| Interface Code | Connector Class |
|----------------|--|
| A | MIL-DTL-5015 Crimp (MS3400-MS3406; MS3450-MS3459) MIL-DTL-26482 Series II (MS3470-MS3476) MIL-DTL-83723 Series I & III |
| B | MIL-DTL-5015 Solder (MS3100-MS3106) See Table 3 |
| C | MIL-DTL-22992 Left Hand Thread |
| D | MIL-DTL-26482 Series I (MS3110-MS3116; MS3120-MS3126) |
| E | MIL-DTL-26500 |
| F | MIL-DTL-38999 Series I & II |
| G | MIL-DTL-28840 |
| H | MIL-DTL-38999 Series III & IV |
| J | MIL-DTL-81511 Series 1, 2, 3 & 4 |
| K | MIL-DTL-83723 Series II |
| V | ITT VEAM Reverse Bayonet |

TABLE 3 - CONNECTOR INTERFACE B

When selecting an accessory with Interface B use the chart below to specify the connector manufacturer being used. If the connector manufacturer is not known please contact Compaero. When generating a part number place the manufacturer letter found below directly after the Interface "B". Shell size of the connector accessory should match the connector shell size.

Example: CPBA491W-1404

The "B" indicates the connector is MIL-DTL-5015 Solder. The "A" indicates the Connector Manufacturer is Amphenol Class A. The "14" indicates the Amphenol Connector is a shell size 14.

| Manufacturer Letter | Connector Manufacturer and/or Connector Class |
|---------------------|---|
| A | Amphenol - Class A (Blue Insert) |
| B | Bendix - Class A, E & R |
| C | Cannon - Class A, E & R |
| R | Amphenol - Class R (Resilient Insert) |



TABLE 2 - CONNECTOR INTERFACE TABLE

| INTERFACE (FROM TABLE 1) | | | | | | DIMENSIONS FROM SERIES SPECIFICATION | | | | |
|--------------------------|----|----|----|--------|--------|--------------------------------------|-------|-------|-------------|-------------|
| A | D | E | F | G | H | A THREAD | B REF | C REF | D REF (INT) | D REF (INT) |
| | 08 | 08 | 08 | | | 7/16 - 28 UNEF | 0.650 | 0.269 | | .188 (F) |
| | | | | | 09 (A) | M12 X 1 - 6H | 0.770 | 0.270 | .248 (H) | |
| 08 | | | | | | 1/2 - 20 UNF | 0.650 | 0.270 | .305 (A) | |
| 03 | 10 | 10 | 10 | | | 9/16 - 24 UNEF | 0.770 | 0.520 | .305 (A) | .188 (F) |
| | | | | | 11 (B) | M15 X 1 - 6H | 0.820 | 0.410 | .248 (H) | |
| 10 | | | | | | 5/8 - 24 UNEF | 0.770 | 0.375 | .305 (A) | |
| | 12 | | 12 | | | 11/16 - 24 UNEF | 0.890 | 0.645 | | .188 (F) |
| | | | | | 13 (C) | M18 X 1 - 6H | 0.940 | 0.520 | .248 (H) | |
| 12 | | 12 | | 11 (A) | | 3/4 - 20 UNEF | 0.940 | 0.511 | .305 (A) | |
| | 14 | 14 | 14 | | | 13/16 - 20 UNEF | 1.020 | 0.730 | | .188 (F) |
| | | | | | 15 (D) | M22 X 1 - 6H | 1.070 | 0.650 | .248 (H) | |
| 14 | | | | 13 (B) | | 7/8 - 20 UNEF | 1.020 | 0.585 | .305 (A) | |
| | 16 | 16 | 16 | | | 15/16 - 20 UNEF | 1.150 | 0.855 | | .188 (F) |
| | | | | | 17 (E) | M25 X 1 - 6H | 1.210 | 0.780 | .248 (H) | |
| 16 | | | | 15 (C) | | 1 - 20 UNEF | 1.210 | 0.710 | .305 (A) | |
| 18 | 18 | 18 | 18 | | | 1 1/16 - 18 UNEF | 1.230 | 0.789 | .305 (A) | .188 (F) |
| | | | | | 19 (F) | M28 X 1 - 6H | 1.360 | 0.880 | .248 (H) | |
| | | | | | 17 (D) | 1 1/8 - 18 UNEF | 1.360 | 0.810 | | |
| 20 | 20 | 20 | 20 | | | 1 3/16 - 18 UNEF | 1.360 | 0.914 | .305 (A) | .188 (F) |
| | | | | | 21 (G) | M31 X 1 - 6H | 1.480 | 1.010 | .248 (H) | |
| | | | | | 19 (E) | 1 1/4 - 18 UNEF | 1.530 | 0.946 | | |
| 22 | 22 | 22 | 22 | | | 1 5/16 - 18 UNEF | 1.480 | 1.039 | .305 (A) | .188 (F) |
| | | | | | 23 (H) | M34 X 1 - 6H | 1.600 | 1.150 | .248 (H) | |
| 24 | 24 | 24 | 24 | 23 (F) | | 1 7/16 - 18 UNEF | 1.730 | 1.154 | .305 (A) | .188 (F) |
| | | | | | 25 (J) | M37 X 1 - 6H | 1.700 | 1.260 | .248 (H) | |
| 61 | | | | | | 1 1/2 - 18 UNEF | 1.670 | 1.194 | .305 (A) | |
| | | | | 25 (G) | | 1 9/16 - UNEF | 1.820 | 1.222 | | |
| 28 | | | | | | 1 3/4 - 18 UNS | 1.970 | 1.389 | .467 (A) | |
| | | | | 29 (H) | | 1 7/8 - 16 UN | 2.190 | 1.422 | | |
| 32 | | | | | | 2 - 18 UNS | 2.220 | 1.635 | .467 (A) | |
| | | | | 33 (J) | | 2 1/16 - 16 UNS | 2.440 | 1.672 | | |
| 36 | | | | | | 2 1/4 - 16 UN | 2.470 | 1.850 | .467 (A) | |
| 40 | | | | | | 2 1/2 - 16 UN | 2.720 | 2.065 | .467 (A) | |
| 44 | | | | | | 2 3/4 - 16 UN | | 2.320 | .467 (A) | |
| 48 | | | | | | 3 - 16 UN | | 2.570 | .467 (A) | |

DISCLAIMER: All information is believed to be reliable. Readers should independently evaluate the suitability of each product for their application. Compaero makes no warranties as to the accuracy or completeness of the information herein and disclaims any liability regarding its use. Specifications are subject to change without notice. Compaero reserves the right to make changes, without notification to the customer, to processing or materials that do not affect compliance with any applicable specification. **Drawings are not to scale.**

Compaero employs traceable methods when sourcing and using material. All manufacturer certifications are kept on file and are available upon request. For more information please contact Compaero.

| Component | Material |
|-----------------------------|---|
| Barrels | Aluminum 6061 or 300 Series Stainless Steel |
| Barrel Castings | Aluminum Alloy A380 |
| Braid / Shield | Tinned Copper per QQB-575 |
| Clamp Bodies | Aluminum 6061 or 300 Series Stainless Steel |
| Clamp Grommets, Bushings | Neoprene, Silicone or Fluorosilicone |
| Clamp Nuts | 300 Series Stainless Steel |
| Clamp Saddles | Aluminum 6061 or 300 Series Stainless Steel |
| Clamp Hardware | 300 Series Stainless Steel |
| Coupling Rings | Aluminum 6061 or 300 Series Stainless Steel |
| E-Nuts | Aluminum 6061 or 300 Series Stainless Steel |
| Ferrules | Aluminum 6061 or 300 Series Stainless Steel |
| Followers | Aluminum 6061 or 300 Series Stainless Steel |
| O-Rings | Silicone |
| Retaining Rings | 300 Series Stainless Steel |
| Self Locking Clips | Non Corrosive material |

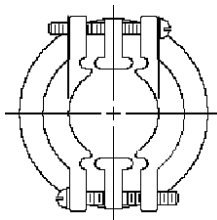
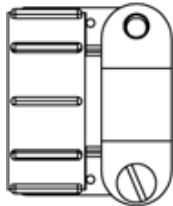
DISCLAIMER: All information is believed to be reliable. Readers should independently evaluate the suitability of each product for their application. Compaero makes no warranties as to the accuracy or completeness of the information herein and disclaims any liability regarding its use. Specifications are subject to change without notice. Compaero reserves the right to make changes, without notification to the customer, to processing or materials that do not affect compliance with any applicable specification. **Drawings are not to scale.**

Table 1 shows common Compaero finishes and their Mil-Spec equivalents (where applicable).
Additional finishes are available upon request.

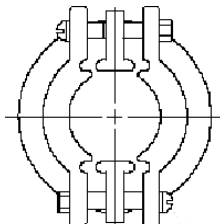
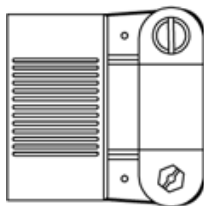
TABLE 1 - Common Material and Finish Codes

| Compaero Ordering Code | AS85049 | Material | Finish |
|------------------------|---------|-----------------|---|
| C | A | Aluminum | Black anodize - In accordance with Class 2 of AMS-A-8625, Type II. -65 to +175 °C |
| F | N | Aluminum | Electroless nickel - In accordance with AMS-C-26074 or AMS2404. -65 to +200 °C |
| H | N/A | Aluminum | Clear Cadmium - SAE-AMS-QQ-P-416 Type II Class 2 over electroless nickel, 1000 Hour Salt Spray, Conductive -65 to +175°C |
| W | W | Aluminum | Cadmium, Olive drab over suitable underplate, 1000 hour salt spray -65 to +175 °C |
| P | X | Aluminum | Nickel fluorocarbon polymer. Nickel with fluorocarbon polymer additives over a suitable underplate to withstand |
| D | Y | Aluminum | Pure dense electrodeposited aluminum in accordance with MIL-DTL-83488, Type II, to withstand 500 hours of salt |
| T | Z | Aluminum | Zinc nickel, Black, in accordance with ASTM B841 over suitable underplate to withstand 1000 hours of salt spray testing. |
| Y | N/A | Aluminum | Zinc-Cobalt, Olive Drab, ASTM B 840 Grade 6 Type D over electroless nickel, 350 Hour Salt Spray, Conductive -65 to +175°C |
| Z | N/A | Aluminum | Zinc-Cobalt, Black, ASTM B 840 Grade 6 Type D over electroless nickel 350 Hour Salt Spray, Conductive -65 to +175°C |
| KB | B | Stainless Steel | Black cadmium - In accordance with AMS-QQ-P-416, Type II, Class 3. -65 to +175 °C |
| K | S | Stainless Steel | Passivate - In accordance with AMS-QQ-P-35, AMS 2700, or ASTM A 967. -65 to + 200 °C |
| KP | XS | Stainless Steel | Nickel fluorocarbon polymer. Nickel with fluorocarbon polymer additives over a suitable underplate to withstand |
| KD | YS | Stainless Steel | Pure dense electrodeposited aluminum in accordance with MIL-DTL-83488, Type II |
| KT | ZS | Stainless Steel | Zinc nickel in accordance with ASTM B841 over suitable underplate to withstand 1000 hours of salt spray testing |
| KN | N/A | Stainless Steel | Electrodeposited Nickel per SAE-AMS-QQ-N-290 Class 1 Grade F |
| M | T | Composite | Composite material without plating |
| MJ | J | Composite | Olive drab cadmium plate in accordance with AMS-QQ-P-416. To withstand 2000 hour salt spray. Finish shall be electrically conductive. -65 to + 175 °C |
| ML | L | Composite | Cadmium (olive drab) over electroless nickel, selective plating -65 to +175 °C |
| MM | M | Composite | Electrically conductive electroless nickel plating. Finish shall withstand 2000 hour salt spray. -65 to +200 °C |

DISCLAIMER: All information is believed to be reliable. Readers should independently evaluate the suitability of each product for their application. Compaero makes no warranties as to the accuracy or completeness of the information herein and disclaims any liability regarding its use. Specifications are subject to change without notice. Compaero reserves the right to make changes, without notification to the customer, to processing or materials that do not affect compliance with any applicable specification. **Drawings are not to scale.**

Order Code A - (MS3057A) Regular Duty Cable Clamp


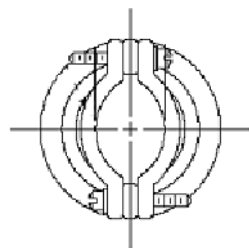
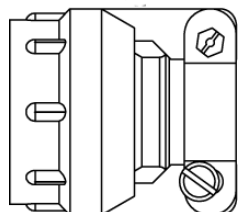
| Entry Order Code | MS3057 Ref | Thread Class 2B | Cable Dia Min | Cable Dia Max | Bushing Reference |
|------------------|------------|------------------|---------------|---------------|-------------------|
| 01 | 3A | 1/2 - 28 UNEF | .156 | .250 | MS3420-3 |
| 02 | 4A | 5/8 - 24 UNEF | .188 | .312 | MS3420-4 |
| 03 | 6A | 3/4 - 20 UNEF | .281 | .438 | MS3420-6 |
| 04 | 8A | 7/8 - 20 UNEF | .344 | .562 | MS3420-8 |
| 05 | 10A | 1 - 20 UNEF | .375 | .625 | MS3420-10 |
| 06 | 12A | 1 3/16 - 18 UNEF | .438 | .750 | MS3420-12 |
| 07 | 16A | 1 7/16 - 18 UNEF | .562 | .938 | MS3420-16 |
| 08 | 20A | 1 3/4 - 18 UNS | .750 | 1.250 | MS3420-20 |
| 09 | 24A | 2 - 18 UNS | .781 | 1.375 | MS3420-24 |
| 10 | 28A | 2 1/4 - 16 UN | .969 | 1.625 | MS3420-28 |
| 11 | 32A | 2 1/2 - 16 UN | 1.125 | 1.875 | MS3420-32 |
| 12 | 40A | 3 - 16 UN | 1.469 | 2.375 | MS3420-40 |

Order Code H - (MS3057D) Heavy Duty Cable Clamp


| Entry Order Code | MS3057 Ref. | Thread Class 2B | Cable Dia Min | Cable Dia Max |
|------------------|-------------|------------------|---------------|---------------|
| 02 | 4D | 5/8 - 24 UNEF | .125 | .312 |
| 03 | 6D | 3/4 - 20 UNEF | .250 | .437 |
| 04 | 8D | 7/8 - 20 UNEF | .312 | .562 |
| 05 | 10D | 1 - 20 UNEF | .350 | .625 |
| 06 | 12D | 1 3/16 - 18 UNEF | .500 | .750 |
| 07 | 16D | 1 7/16 - 18 UNEF | .625 | .937 |
| 08 | 20D | 1 3/4 - 18 UNS | .875 | 1.250 |
| 09 | 24D | 2 - 18 UNS | 1.000 | 1.375 |
| 10 | 28D | 2 1/4 - 16 UN | 1.250 | 1.625 |
| 11 | 32D | 2 1/2 - 16 UN | 1.437 | 1.875 |

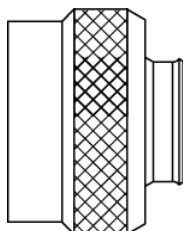
DISCLAIMER: All information is believed to be reliable. Readers should independently evaluate the suitability of each product for their application. Compaero makes no warranties as to the accuracy or completeness of the information herein and disclaims any liability regarding its use. Specifications are subject to change without notice. Compaero reserves the right to make changes, without notification to the customer, to processing or materials that do not affect compliance with any applicable specification. **Drawings are not to scale.**

Order Code C - (MS3057C) Heavy Duty Environmental Cable Clamp



| Entry Order Code | MS3057 Ref | A Thread Class 2B | Cable Dia Min | Cable Dia Max | Bushing Reference |
|------------------|------------|-------------------|---------------|---------------|-------------------|
| 01 | 3C | 1/2 - 28 UNEF | .156 | .219 | MS3420-3 |
| 02 | 4C | 5/8 - 24 UNEF | .188 | .312 | MS3420-4 |
| 03 | 6C | 3/4 - 20 UNEF | .281 | .438 | MS3420-6 |
| 04 | 8C | 7/8 - 20 UNEF | .312 | .562 | MS3420-8 |
| 05 | 10C | 1 - 20 UNEF | .375 | .625 | MS3420-10 |
| 06 | 12C | 1 3/16 - 18 UNEF | .500 | .750 | MS3420-12 |
| 07 | 16C | 1 7/16 - 18 UNEF | .625 | .938 | MS3420-16 |
| 08 | 20C | 1 3/4 - 18 UNS | .938 | 1.250 | MS3420-20 |
| 09 | 24C | 2 - 18 UNS | 1.000 | 1.375 | MS3420-24 |
| 10 | 28C | 2 1/4 - 16 UN | 1.250 | 1.625 | MS3420-28 |
| 11 | 32C | 2 1/2 - 16 UN | 1.500 | 1.875 | MS3420-32 |

Order Code E - Environmental Sealing Nut (without saddles)



| Entry Order Code | MS3057 Ref | A Thread Class 2B | Cable Dia Min | Cable Dia Max | Bushing Reference |
|------------------|------------|-------------------|---------------|---------------|-------------------|
| 01 | 3C | 1/2 - 28 UNEF | .156 | .219 | MS3420-3 |
| 02 | 4C | 5/8 - 24 UNEF | .188 | .312 | MS3420-4 |
| 03 | 6C | 3/4 - 20 UNEF | .281 | .438 | MS3420-6 |
| 04 | 8C | 7/8 - 20 UNEF | .312 | .562 | MS3420-8 |
| 05 | 10C | 1 - 20 UNEF | .375 | .625 | MS3420-10 |
| 06 | 12C | 1 3/16 - 18 UNEF | .500 | .750 | MS3420-12 |
| 07 | 16C | 1 7/16 - 18 UNEF | .625 | .938 | MS3420-16 |
| 08 | 20C | 1 3/4 - 18 UNS | .938 | 1.250 | MS3420-20 |
| 09 | 24C | 2 - 18 UNS | 1.000 | 1.375 | MS3420-24 |
| 10 | 28C | 2 1/4 - 16 UN | 1.250 | 1.625 | MS3420-28 |
| 11 | 32C | 2 1/2 - 16 UN | 1.500 | 1.875 | MS3420-32 |

DISCLAIMER: All information is believed to be reliable. Readers should independently evaluate the suitability of each product for their application. Compaero makes no warranties as to the accuracy or completeness of the information herein and disclaims any liability regarding its use. Specifications are subject to change without notice. Compaero reserves the right to make changes, without notification to the customer, to processing or materials that do not affect compliance with any applicable specification. **Drawings are not to scale.**



| Shell Size | Connector Accessories onto Connector Threads Torque Values are in Inch-Pounds | | | |
|------------|--|---|--|---|
| | MIL-DTL-5015 (MS3100) MIL-DTL-26500 MIL-DTL-81511 | MIL-DTL-26482 S1 MIL-DTL-38999 S1 & S2 | MIL-DTL-5015 (MS3400) MIL-DTL-26482 S2 MIL-DTL-28840 | MIL-DTL-38999 S3 & S4 MIL-DTL-83723 MIL-DTL-22992 |
| 08, 09 | 30 - 40 | 30 - 40 | 51 - 61 | 51 - 61 |
| 10, 11 | 30 - 40 | 30 - 40 | 71 - 81 | 71 - 81 |
| 12, 13 | 35 - 45 | 35 - 45 | 103 - 113 | 103 - 113 |
| 14, 15 | 35 - 45 | 35 - 45 | 111 - 121 | 111 - 121 |
| 16, 17 | 35 - 45 | 35 - 45 | 111 - 121 | 111 - 121 |
| 18, 19 | 35 - 45 | 35 - 45 | 111 - 121 | 111 - 121 |
| 20, 21 | 75 - 85 | 75 - 85 | 131 - 141 | 131 - 141 |
| 22, 23 | 75 - 85 | 75 - 85 | 131 - 141 | 131 - 141 |
| 24, 25 | 75 - 85 | 75 - 85 | 131 - 141 | 131 - 141 |
| 28 | 115 - 125 | 115 - 125 | 143 - 153 | 143 - 153 |
| 32 | 115 - 125 | 115 - 125 | 143 - 153 | 143 - 153 |
| 36 | 115 - 125 | 115 - 125 | 143 - 153 | 143 - 153 |
| 40 | 155 - 165 | 155 - 165 | 159 - 169 | 159 - 169 |
| 44 | 155 - 165 | 155 - 165 | 159 - 169 | 159 - 169 |
| 48 | 155 - 165 | 155 - 165 | 159 - 169 | 159 - 169 |

| Cable Clamps onto Backshells Torque Values are in Inch-Pounds | |
|--|-----------------------------|
| Clamp Entry Size | Torque Value in Inch-Pounds |
| 01 | 35 - 40 |
| 02 | 35 - 40 |
| 03 | 35 - 55 |
| 04 | 35 - 55 |
| 05 | 35 - 55 |
| 06 | 40 - 60 |
| 07 | 40 - 60 |
| 08 | 40 - 60 |
| 09 | 80 - 100 |
| 10 | 80 - 100 |
| 11 | 80 - 100 |
| 12 | 80 - 100 |

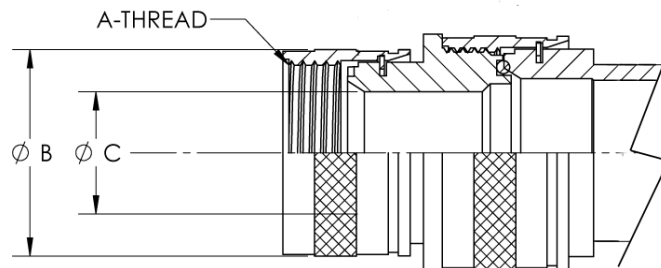
| Cable Clamp Hardware (Screws) | |
|-------------------------------|-----------------------------|
| Thread | Torque Value in Inch-Pounds |
| 2-56 | 1.5 - 2.5 |
| 4-40 | 3.5 - 4.5 |
| 6-32 | 5.0 - 7.0 |
| 8-32 | 7.0 - 9.0 |
| 10-32 | 9.0 - 11.0 |
| 1/4 - 20 | 11.0 - 13.0 |

DISCLAIMER: All information is believed to be reliable. Readers should independently evaluate the suitability of each product for their application. Compaero makes no warranties as to the accuracy or completeness of the information herein and disclaims any liability regarding its use. Specifications are subject to change without notice. Compaero reserves the right to make changes, without notification to the customer, to processing or materials that do not affect compliance with any applicable specification. **Drawings are not to scale.**

Style 2 Coupling Rings

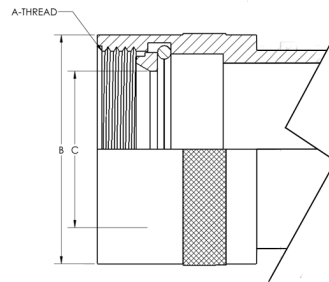
When the specified cable entry exceeds dimension C on the connector interface side, Style 2 will be used. Style 2 adapters will maintain environmental sealing and EMI/RFI shielding (if specified in the series). The specified overall length on a Style 2 adapter will be increased by 1.25" maximum, however, will be kept as minimal as possible. To specify a one piece adapter (Style 1 when Style 2 should be used) place a modification code -014 at the end of the part number when ordering.

Modification Code Example: CPA461W-1410-VG0-014



Direct Coupling Rings (Option D)

Direct coupling rings can be specified on most Compaero adapters and backshells. Below is a diagram of a direct coupling ring when called out on a straight adapter or backshell. When specifying direct coupling on 45 and 90 degree parts a screw in adapter will be supplied.

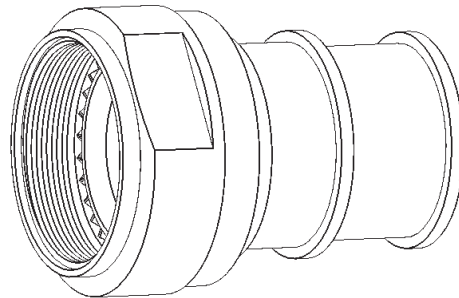


Safety Wire Holes (Option T)

Safety wire holes can be specified on standard rotatable coupling rings to use with safety wire after installation. Safety wire ensures the coupling ring will not un-couple during shock and/or vibration. These are common on AS85049 accessories. When this option is specified the coupling ring will have 3 equally spaced wire holes (120 degrees apart). Safety Wire Holes are sufficient to accommodate 0.020 inch wire.

Wrench Flat Coupling Rings (Option W)

Common on most TACOM adapters, wrench flats are an available option on most Compaero adapters and backshells. Wrench flats allow for an easier way of screwing on the coupling ring (with a wrench) when working in tight spaces. For specifications on specific wrench flat dimensions (based on shell size and connector series) please contact Compaero.



Self-Locking Coupling Rings, Detent (Option S)

Detent style self locking feature a ratcheting coupling ring using non corrosive clips located within the coupling ring. Many AS85049 specifications specify this detent style self locking coupling ring making this one of the most popular ways of achieving a self locking adapter or backshell.

Seat-Lock™ Coupling Rings, Non-Detent Self-Locking (Option E)

Using a spring loaded retaining ring, Compaero Seat-Lock™ coupling rings are a non detent way to achieve self locking. This option also ensures that the accessory teeth of the connector mate properly with the teeth on the adapter or backshell by applying constant force between the two. The Compaero Seat-Lock™ option is an excellent choice if an easy, economical self locking solution is required.



How To Order:

CPA461WD-1203-B1-VG0-8

- COUPLING RING OPTION
- OMIT FOR STANDARD ROTATABLE
- D** -DIRECT COUPLING
- E** -SEAT-LOCK™
- S** -SELF LOCKING
- T** - SAFETY WIRE HOLES
- W** -WRENCH FLATS

DISCLAIMER: All information is believed to be reliable. Readers should independently evaluate the suitability of each product for their application. Compaero makes no warranties as to the accuracy or completeness of the information herein and disclaims any liability regarding its use. Specifications are subject to change without notice. Compaero reserves the right to make changes, without notification to the customer, to processing or materials that do not affect compliance with any applicable specification. Drawings are not to scale.