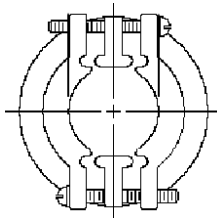
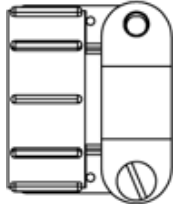
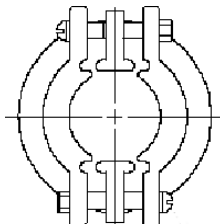
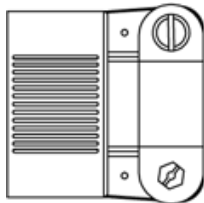


Order Code A - (MS3057A) Regular Duty Cable Clamp


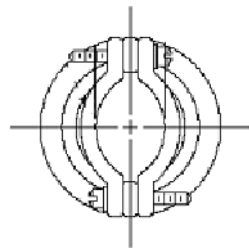
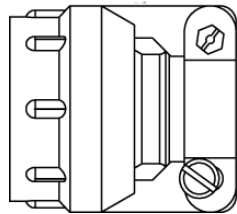
Entry Order Code	MS3057 Ref	Thread Class 2B	Cable Dia Min	Cable Dia Max	Bushing Reference
01	3A	1/2 - 28 UNEF	.156	.250	MS3420-3
02	4A	5/8 - 24 UNEF	.188	.312	MS3420-4
03	6A	3/4 - 20 UNEF	.281	.438	MS3420-6
04	8A	7/8 - 20 UNEF	.344	.562	MS3420-8
05	10A	1 - 20 UNEF	.375	.625	MS3420-10
06	12A	1 3/16 - 18 UNEF	.438	.750	MS3420-12
07	16A	1 7/16 - 18 UNEF	.562	.938	MS3420-16
08	20A	1 3/4 - 18 UNS	.750	1.250	MS3420-20
09	24A	2 - 18 UNS	.781	1.375	MS3420-24
10	28A	2 1/4 - 16 UN	.969	1.625	MS3420-28
11	32A	2 1/2 - 16 UN	1.125	1.875	MS3420-32
12	40A	3 - 16 UN	1.469	2.375	MS3420-40

Order Code H - (MS3057D) Heavy Duty Cable Clamp


Entry Order Code	MS3057 Ref.	Thread Class 2B	Cable Dia Min	Cable Dia Max
02	4D	5/8 - 24 UNEF	.125	.312
03	6D	3/4 - 20 UNEF	.250	.437
04	8D	7/8 - 20 UNEF	.312	.562
05	10D	1 - 20 UNEF	.350	.625
06	12D	1 3/16 - 18 UNEF	.500	.750
07	16D	1 7/16 - 18 UNEF	.625	.937
08	20D	1 3/4 - 18 UNS	.875	1.250
09	24D	2 - 18 UNS	1.000	1.375
10	28D	2 1/4 - 16 UN	1.250	1.625
11	32D	2 1/2 - 16 UN	1.437	1.875

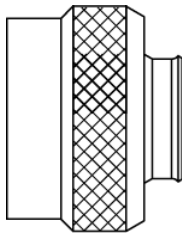
DISCLAIMER: All information is believed to be reliable. Readers should independently evaluate the suitability of each product for their application. Compaero makes no warranties as to the accuracy or completeness of the information herein and disclaims any liability regarding its use. Specifications are subject to change without notice. Compaero reserves the right to make changes, without notification to the customer, to processing or materials that do not affect compliance with any applicable specification. **Drawings are not to scale.**

Order Code C - (MS3057C) Heavy Duty Environmental Cable Clamp



Entry Order Code	MS3057 Ref	A Thread Class 2B	Cable Dia Min	Cable Dia Max	Bushing Reference
01	3C	1/2 - 28 UNEF	.156	.219	MS3420-3
02	4C	5/8 - 24 UNEF	.188	.312	MS3420-4
03	6C	3/4 - 20 UNEF	.281	.438	MS3420-6
04	8C	7/8 - 20 UNEF	.312	.562	MS3420-8
05	10C	1 - 20 UNEF	.375	.625	MS3420-10
06	12C	1 3/16 - 18 UNEF	.500	.750	MS3420-12
07	16C	1 7/16 - 18 UNEF	.625	.938	MS3420-16
08	20C	1 3/4 - 18 UNS	.938	1.250	MS3420-20
09	24C	2 - 18 UNS	1.000	1.375	MS3420-24
10	28C	2 1/4 - 16 UN	1.250	1.625	MS3420-28
11	32C	2 1/2 - 16 UN	1.500	1.875	MS3420-32

Order Code E - Environmental Sealing Nut (without saddles)



Entry Order Code	MS3057 Ref	A Thread Class 2B	Cable Dia Min	Cable Dia Max	Bushing Reference
01	3C	1/2 - 28 UNEF	.156	.219	MS3420-3
02	4C	5/8 - 24 UNEF	.188	.312	MS3420-4
03	6C	3/4 - 20 UNEF	.281	.438	MS3420-6
04	8C	7/8 - 20 UNEF	.312	.562	MS3420-8
05	10C	1 - 20 UNEF	.375	.625	MS3420-10
06	12C	1 3/16 - 18 UNEF	.500	.750	MS3420-12
07	16C	1 7/16 - 18 UNEF	.625	.938	MS3420-16
08	20C	1 3/4 - 18 UNS	.938	1.250	MS3420-20
09	24C	2 - 18 UNS	1.000	1.375	MS3420-24
10	28C	2 1/4 - 16 UN	1.250	1.625	MS3420-28
11	32C	2 1/2 - 16 UN	1.500	1.875	MS3420-32

DISCLAIMER: All information is believed to be reliable. Readers should independently evaluate the suitability of each product for their application. Compaero makes no warranties as to the accuracy or completeness of the information herein and disclaims any liability regarding its use. Specifications are subject to change without notice. Compaero reserves the right to make changes, without notification to the customer, to processing or materials that do not affect compliance with any applicable specification. **Drawings are not to scale.**