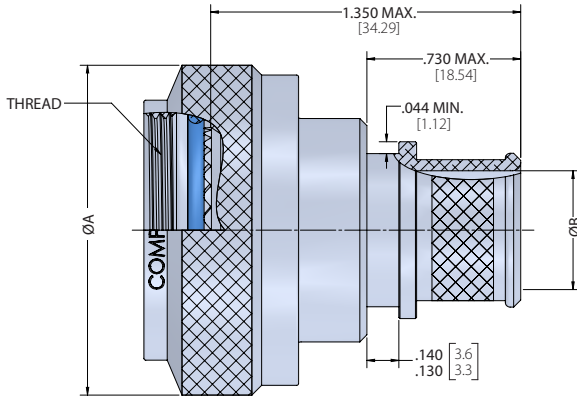


# STRAIGHT, 45° & 90° ADAPTERS

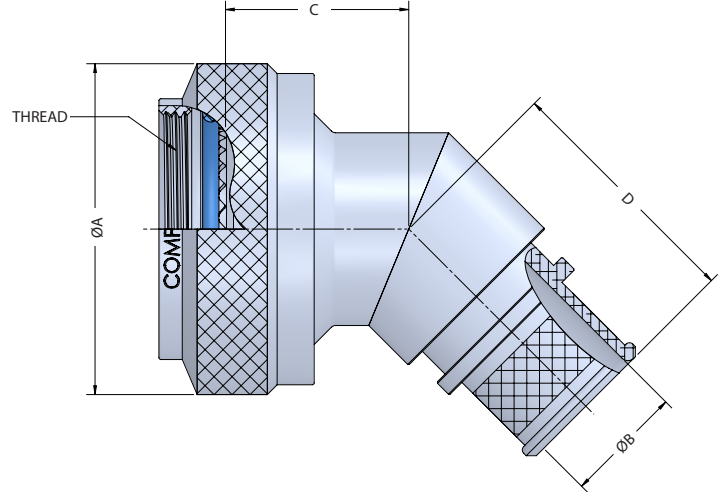
For Connectors: MIL-DTL-38999, Series I & II  
Shield Termination, Boot Accommodation



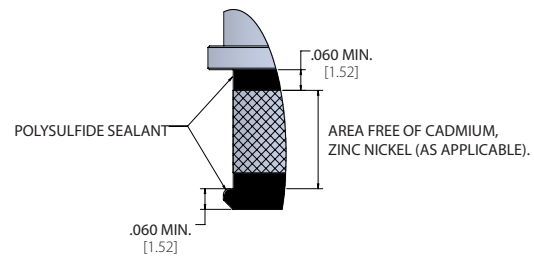
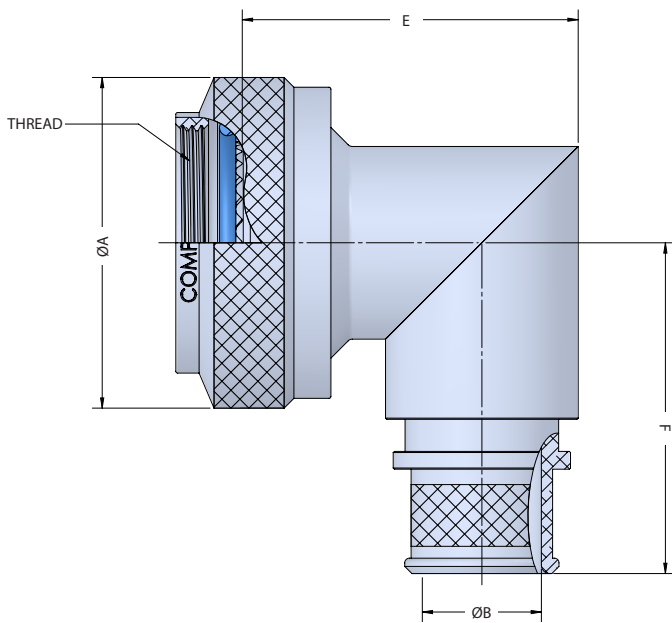
## Straight



## 45° Angled



## 90° Angled



### Polysulfide Option

For MIL Finish Codes : P & ZP

## CP85049/ 85 - 08 P 02

Compaero Basic Part Number

Backshell Style (For MIL-DTL-38999 Series I & II Connectors)

85 - Straight

86 - 45° Angled

87 - 90° Angled

Configuration

"-" (DASH) Detented self-locking

"N" Non detented self-locking

Entry Size

See table 1, 2 or 3 according to the Backshell Style.

Material & Finish

Applicable finishes: W, N, Z, P & ZP

See page 5 for details.

Shell Size

See table 1, 2 or 3 according to the Backshell Style.

inches [millimeters]

THIS DRAWING IS THE PROPERTY OF COMPAERO, INC AND MUST NOT BE USED FOR COMMERCIAL PURPOSES WITHOUT WRITTEN CONSENT OF THE COMPANY. DRAWING CORRECT AT TIME OF PUBLISHING.

SALES@COMPAERO.COM

# STRAIGHT, 45° & 90° ADAPTERS

For Connectors: MIL-DTL-38999, Series I & II  
Shield Termination, Boot Accommodation



**Table 1** Shell & Entry Sizes for Backshell Style - 85

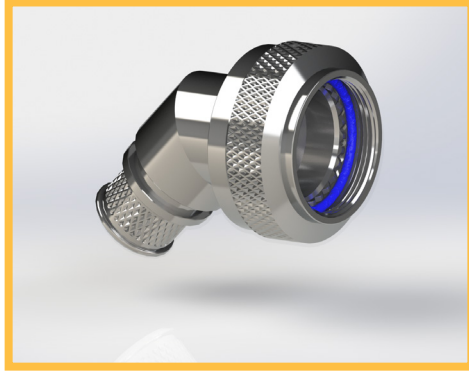
SHELL SIZE	ENTRY SIZE	THREAD UNEF CLASS 2B	ØA MAX.		ØB	
					± .010	± 0.25
			in	mm	in	mm
08	01	0.4375-28	0.859	21.82	N/A	N/A
	02				0.250	6.35
10	01	0.5625-24	0.986	25.04	N/A	N/A
	02				0.312	7.92
12	01	0.6875-24	1.156	29.36	0.312	7.92
	02				0.438	11.13
14	01	0.8125-20	1.281	32.54	0.438	11.13
	02				0.562	14.27
16	01	0.9375-20	1.406	35.71	0.500	12.70
	02				0.625	15.88
18	01	1.0625-18	1.516	38.51	0.625	15.88
	02				0.750	19.05
20	01	1.1875-18	1.641	41.68	0.625	15.88
	02				0.812	20.62
22	01	1.3125-18	1.766	44.86	0.688	17.48
	02				0.938	23.83
24	01	1.4375-18	1.891	48.03	0.750	19.05
	02				1.000	25.40

Metric equivalents are given for general information only and are based upon 1.00 inch = 25.4 mm.

# STRAIGHT, 45° & 90° ADAPTERS

For Connectors: MIL-DTL-38999, Series I & II  
Shield Termination, Boot Accommodation

**COMPAERO**



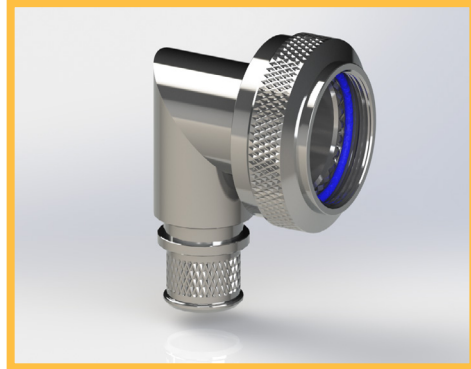
**Table 2** Shell & Entry Sizes for Backshell Style - 86

SHELL SIZE	ENTRY SIZE	THREAD UNEF CLASS 2B	ØA MAX.		ØB		C MAX.		D MAX.	
			in	mm	±.010	±0.25	in	mm	in	mm
					in	mm				
08	02	0.4375-28	0.859	21.82	N/A	N/A	0.87	22.10	1.16	29.46
	03				0.250	6.35				
10	02	0.5625-24	0.984	24.99	N/A	N/A	0.90	22.86	1.19	30.23
	03				0.312	7.92				
12	02	0.6875-24	1.156	29.36	0.312	7.92	0.92	23.37	1.21	30.73
	03				0.438	11.13				
14	02	0.8125-20	1.281	32.54	0.438	11.13	0.95	24.13	1.24	31.50
	03				0.562	14.27				
16	02	0.9375-20	1.406	35.71	0.500	12.70	0.98	24.89	1.26	32.00
	03				0.625	15.88				
18	02	1.0625-18	1.516	38.51	0.625	15.88	0.98	24.89	1.27	32.26
	03				0.750	19.05				
20	02	1.1875-18	1.641	41.68	0.625	15.88	1.01	25.65	1.30	33.02
	03				0.812	20.62				
22	02	1.3125-18	1.766	44.86	0.688	17.48	1.04	26.42	1.33	33.78
	03				0.938	23.83				
24	02	1.4375-18	1.891	48.03	0.750	19.05	1.07	27.18	1.35	34.29
	03				1.000	25.40				

Metric equivalents are given for general information only and are based upon 1.00 inch = 25.4 mm.

# STRAIGHT, 45° & 90° ADAPTERS

For Connectors: MIL-DTL-38999, Series I & II  
Shield Termination, Boot Accommodation



**Table 3** Shell & Entry Sizes for backshell style - 87

SHELL SIZE	ENTRY SIZE	THREAD UNEF CLASS 2B	ØA MAX.		ØB		E MAX.		F MAX.	
			in	mm	± .010	± 0.25	in	mm	in	mm
					in	mm				
08	02	0.4375-28	0.858	21.8	N/A	N/A	1.375	34.9	1.417	36.0
	03				0.250	6.4				
10	02	0.5625-24	0.984	25.0	N/A	N/A	1.437	36.5	1.480	37.6
	03				0.312	7.9				
12	02	0.6875-24	1.157	29.4	0.312	7.9	1.562	39.7	1.553	39.4
	03				0.438	11.1				
14	02	0.8125-20	1.279	32.5	0.438	11.1	1.687	42.8	1.614	41.0
	03				0.562	14.3				
16	02	0.9375-20	1.406	35.7	0.500	12.7	1.750	44.5	1.678	42.6
	03				0.625	15.9				
18	02	1.0625-18	1.516	38.5	0.625	15.9	1.875	47.6	1.733	44.0
	03				0.750	19.1				
20	02	1.1875-18	1.642	41.7	0.625	15.9	1.938	49.2	1.796	45.6
	03				0.812	20.6				
22	02	1.3125-18	1.768	49.9	0.688	17.5	2.062	52.4	1.859	47.2
	03				0.938	23.8				
24	02	1.4375-18	1.889	48.0	0.750	19.1	2.125	54.0	1.919	48.7
	03				1.000	25.4				

Metric equivalents are given for general information only and are based upon 1.00 inch = 25.4 mm.

MIL FINISH CODE	BASE MATERIAL OF ADAPTER BODY AND COUPLING RING	DESCRIPTION
A	Aluminum Alloy	Black Anodize - in accordance with Class 2 of MIL-A-8625, Type II, -65° to +175° C. 500 Hour Salt Spray.
W	Aluminum Alloy	Cadmium - Olive Drab over suitable underplate, -65° to +175° C. (Not for use in space application) 1000 Hour Salt Spray.
N	Aluminum Alloy	Electroless Nickel - in accordance with AMS-C-26074 or AMS2404, -65° to +200° C. (Not for Navy use) 96 Hour Salt Spray.
Z	Aluminum Alloy	Zinc Nickel in accordance with ASTM B841 over suitable underplate. Color shall be Black, Conductive and Non-Reflective. Final finish shall be electrically Conductive, -65° to +175° C. (Not for use in space application) 1000 Hour Salt Spray.
P	Aluminum Alloy	Cadmium (Olive Drab) over electroless nickel, with Polysulfide sealant strips, Selective Plating, -65° to +175° C. (Not for use in space application) 96 Hour Salt Spray.
ZP	Aluminum Alloy	Zinc Nickel over electroless nickel, with Polysulfide sealant strips, Selective Plating, -65° to +175° C. (Not for use in space application) 96 Hour Salt Spray.

Please note that the colours shown above are for illustrative purposes only-actual finish colour may vary.